



Bottom Entry Mixers

Materials of Construction

All wetted parts are in 316 stainless steel. Electropolished finish is available as an optional extra.

Motor Specifications

TEFV and ATEX approved Flameproof motors are available as standard. Inverter rated, stainless steel and other motors are available as optional extras.

Mounting

Stainless steel flange fitting available as standard. Clamp-on fitting optional for smaller machines.

Single mechanical shaft sealing

A single carbon/ceramic mechanical shaft seal with viton elastomers is standard. Other face materials and elastomers available as an optional extra.

Double mechanical shaft sealing

Double mechanical shaft seals are required when processing products that are abrasive, sticky or viscous or when the system is under vacuum. Sealant flushing systems can be supplied as an optional extra.

Cleaning

Clean-In-Place design. Simple, easy to clean construction.

Operating Pressure

From full vacuum up to 150psi (10 Bar). Higher pressure units are available on request.

Ultra Hygienic Model

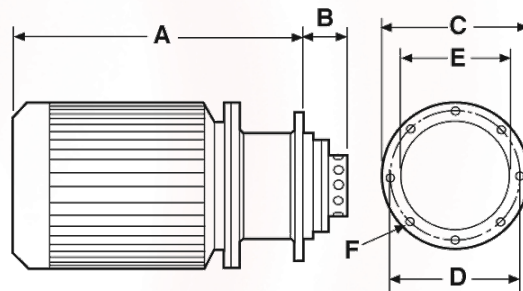
Available with features including:

- Crevice-free construction
- Hygienic metal bellows shaft seal
- Electropolished finish

Diagrams & Dimensions

Larger models available upon request. All dimensions are in millimetres.

Bottom Entry Mixers



Model	kW	RPM	TEFV A	EExD A	B	C	D	E	F
BE243	.75	3000	320	322	67	152	127	102	6x11
BE275	1.1	3000	312	318	77	210	178	128	6x14
BE387	2.2	3000	372	383	80	267	241	190	8x14
BE425	4	3000	432	443	83	267	241	190	8x14
BE450	7.5	3000	512	520	99	267	241	197	8x14
BE500	15	3000	605	605	113	305	267	197	8x17
BE600	22	3000	667	672	120	305	267	216	8x17

The dimensions shown are approximate only and certified diagrams should be used for installation purposes. Silverson reserves the right to change dimensions and specifications without notice.